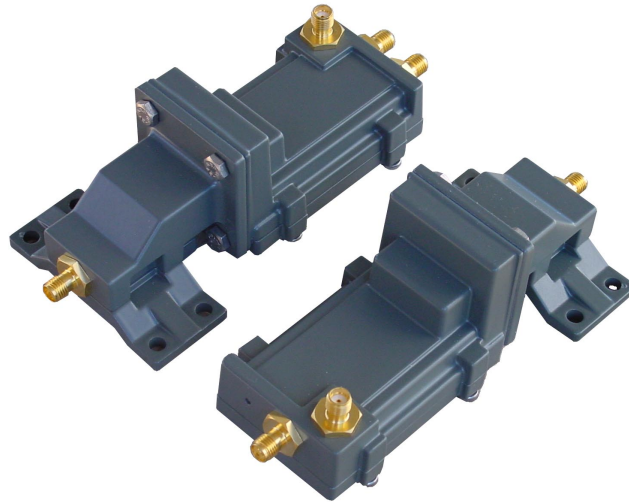


SMW Ku-band ILA



Ku-band Amplifiers

Both models cover the whole Ku-band 10.7-12.75 GHz, but can be supplied with integrated filters for specified band. Available with min. 28 dB gain and single output SMA, or min. 22 dB with integrated splitter and dual output SMA. The very high reliability allows two-year warranty.

The amplifiers are individually hand tuned to get the very best performance available for each unit. Quality and long term reliability is also essential. Therefore are all LNAs tested according to a very extensive test program, which includes heating, cooling, water-proof testing and rigorous electrical testing.

Swedish Microwave was founded 1986 and, within Europe, is the oldest manufacturer of LNAs. In the standard product range we have DRO-LNAs, PLL-LNAs, LNAs, Block Downconverters (BDC), Up- & Down Converters, Quattro LNAs, Twin LNAs, Ortho mode transducers (OMT), Line Amplifiers and Feed horns.

Swedish Microwave is today one of the leading manufacturers of microwave components needed for satellite receiving equipment and other industrial products.

Specification SMW Ku-band Amplifiers

SMW	ILA Ku 28 dB SMA	ILA Ku 22 dB Dual Output SMA
Frequency range	10.7 - 12.75 GHz	10.7 - 12.75 GHz
Gain min.	28 dB	22 dB
Gain variation max.	+/- 3 dB	+/- 3 dB
	+/- 0.3 dB within 30 MHz	+/- 0.3 dB within 30 MHz
Noise figure typical	5.5 dB	5.5 dB
1 dB gain compression point	0 dBm	-8 dBm
3rd order intermodulation	+10 dBm	+2 dBm
Input	SMA-connector	SMA-connector
Output	SMA-connector	SMA-connectors
DC power via separate connector	12-24V / 40 mA typ	12-24V / 40 mA typ
Operating temperature	-30 to +60°C	-30 to +60°C
Dimensions	129 x 40x 40 mm	129 x 40x 40 mm
Material	Diecast aluminium	Diecast aluminium
Finish	Powder coat	Powder coat
Temperature range	-30° to +60°C	-30° to +60°C
Weight	200 g	200 g
Option	Specified frequency ranges with integrated filters	

